

F

E

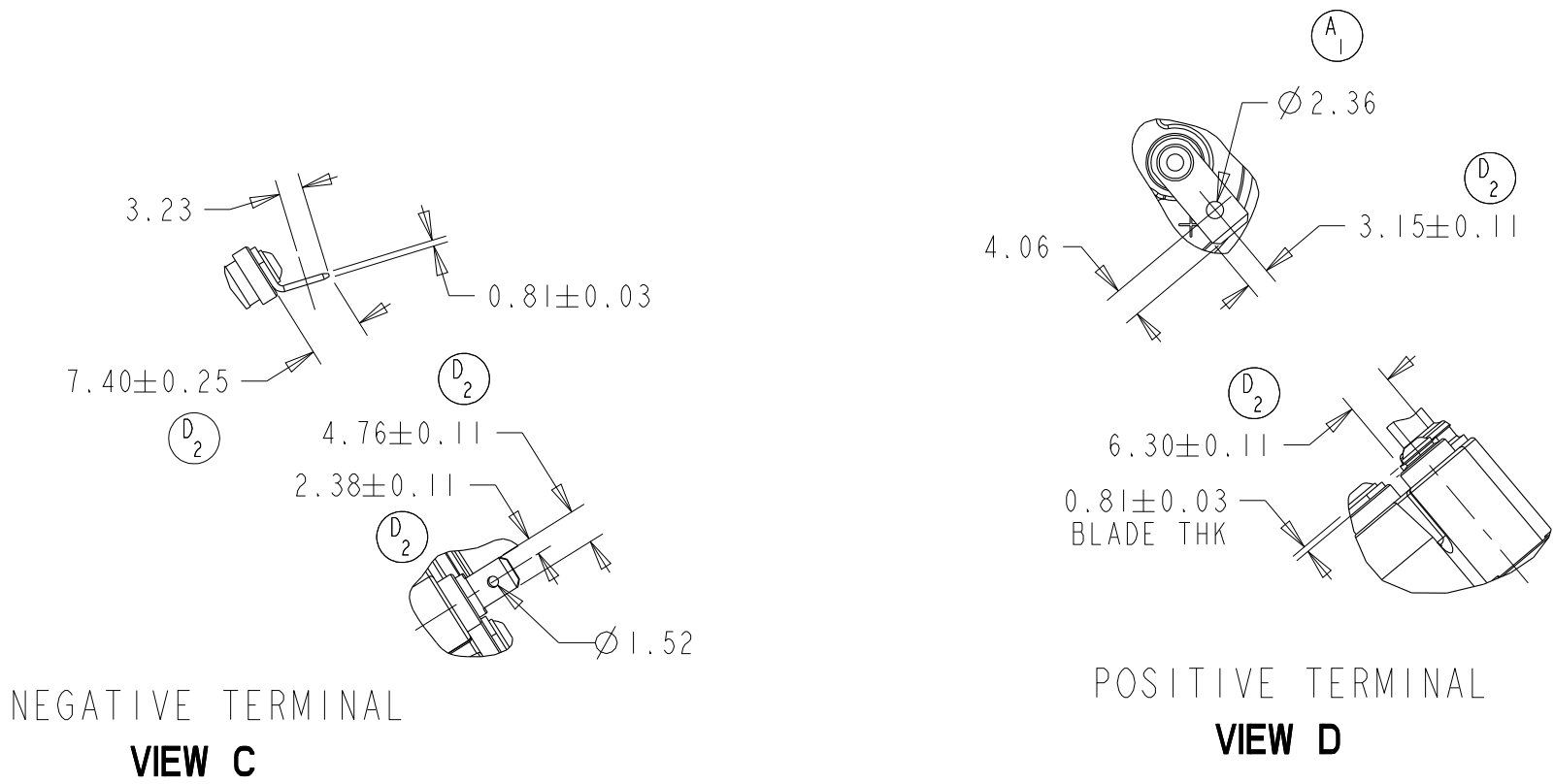
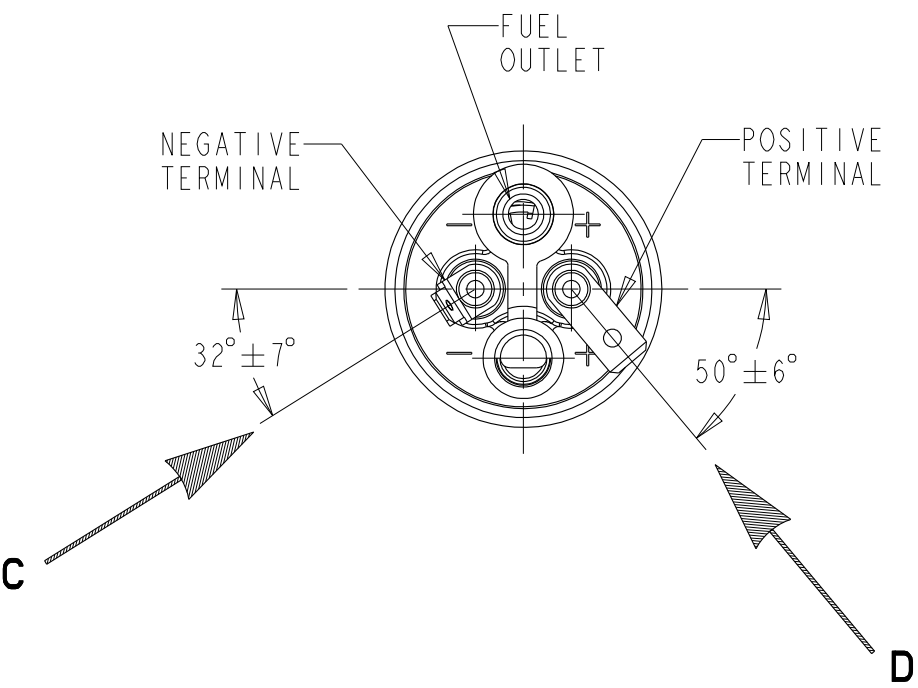
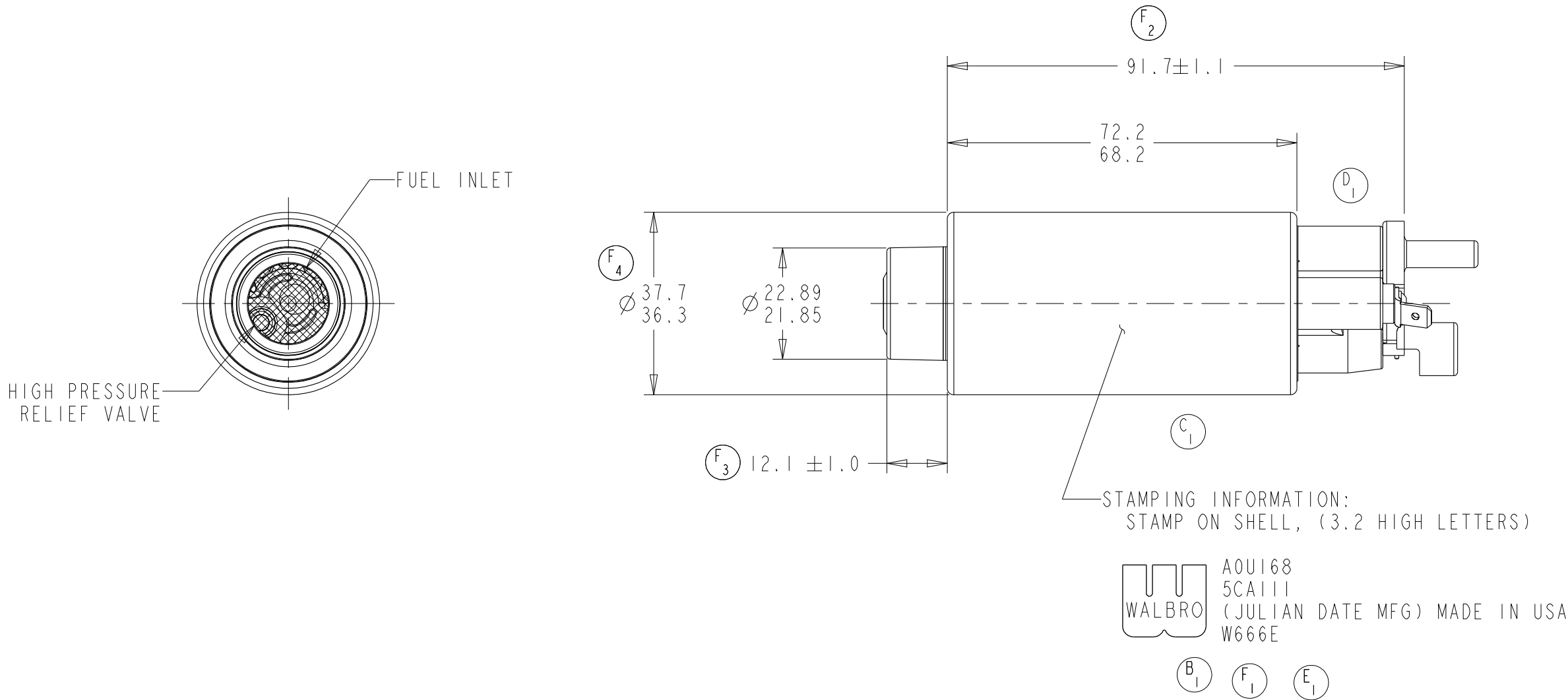
D

C

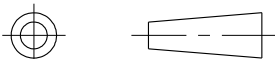

B

A

REVISIONS						
ZONE	LTR	DESCRIPTION	CHANGE No	DATE	BY	APPR'D
		REL FOR PROD	63447	16FEB94	RMB	ERM
5-C	A	A1 Ø2.36 WAS Ø1.52	63505	31MAR94		RMB
5-C	B	B1 ADDED STAMPING INFO	64907	03SEP99	SLK	RMB
5-D	C	C1 REMOVED INK STRIPE	66906	13APR00	RMB	MMcK
4-D	D	D1 CHANGED OUTLET COVER	68710	02DEC03	RMB	BJB
5-8,B		D2 ADDED DIM TOLERANCE				
4-C	E	E1 REMOVED PATENT #'S	71352	20JUN08	DRG	BLM
5-C	F	F1 UPDATED STAMPING INFO	C'5018	28FEB18	SLK	BLM
5-E		F2 91.7±1.1 WAS 91.5±1.0				
6-D		F3 12.1±1.0 WAS 12.4/11.2				
6-D		F4 37.7/36.3 WAS 37.6/36.3				
---		F5 UPDATED DRAWING FORMAT				



KEY PRODUCT CHARACTERISTICS			
REFER TO TI AUTOMOTIVE GLOBAL ADVANCED QUALITY PLANNING DOCUMENT # FTDS-PI-P-021 FOR THE CLASSIFICATION AND CONTROL OF KEY PRODUCT CHARACTERISTICS		TOTAL ON SHEET	TOTAL ON DRAWING
▽ - SAFETY CHARACTERISTIC	--	--	--
◇ - CRITICAL CHARACTERISTIC	--	--	--
⬢ - HIGH IMPACT CHARACTERISTIC	--	--	--
THIS DRAWING IS PROPERTY OF TI AUTOMOTIVE. TI AUTOMOTIVE CLAIMS PROPRIETARY RIGHTS IN THE SUBJECT MATTER SHOWN AND DESCRIBED ON THIS DRAWING AND RETAINS ALL INTELLECTUAL PROPERTY RIGHTS. THE DRAWING IS PROVIDED FOR REFERENCE PURPOSES ONLY AND ON THE EXPRESS CONDITION THAT IT WILL BE HELD IN CONFIDENCE. THIS DRAWING SHALL NOT BE DISCLOSED TO OTHERS OR USED FOR THE PURPOSE OF MANUFACTURE BY OR PROCUREMENT FROM OTHERS OF THE ARTICLE OR PART SHOWN WITHOUT TI AUTOMOTIVE'S EXPRESS WRITTEN CONSENT. NO LICENSE OR OTHER RIGHT IS GIVEN OR IMPLIED BY THE PROVISION OF THIS DRAWING TO RECIPIENT. COPYRIGHT, TI AUTOMOTIVE 2010, ALL RIGHTS RESERVED.			

METRIC			
ALL DIMENSIONS ARE IN MILLIMETERS			
DO NOT SCALE			
DECIMAL TOLERANCES UNLESS OTHERWISE SPECIFIED ONE PLACE ±0.25 TWO PLACE ±0.13 ANGLES ±1°			
	THIRD ANGLE PROJECTION		
DIMENSIONS IN ACCORDANCE WITH ASME Y14.5 - 2009			
		630 COLUMBIA ST. CARO, MI 48723 +1 989.673.7727	
TI Automotive			
ENGINEER:			MATERIAL/SPECIFICATION:
DESIGNER:	KGS	08FEB1994	
CAD SYSTEM: PRO/E	SCALE: 1:1	SHEET NO. 1 OF 1	
REFERENCE ID/REV.: A0J015		2D PLM REFERENCE/REV.: AR0005918/AD	
REFERENCE ID/REV.: 000119904/AA		3D PLM REFERENCE/REV.: 000007507/AC	
DRAWING NAME: FUEL PUMP OUTLINE			
SIZE: A2	DRAWING NUMBER: A0U168		